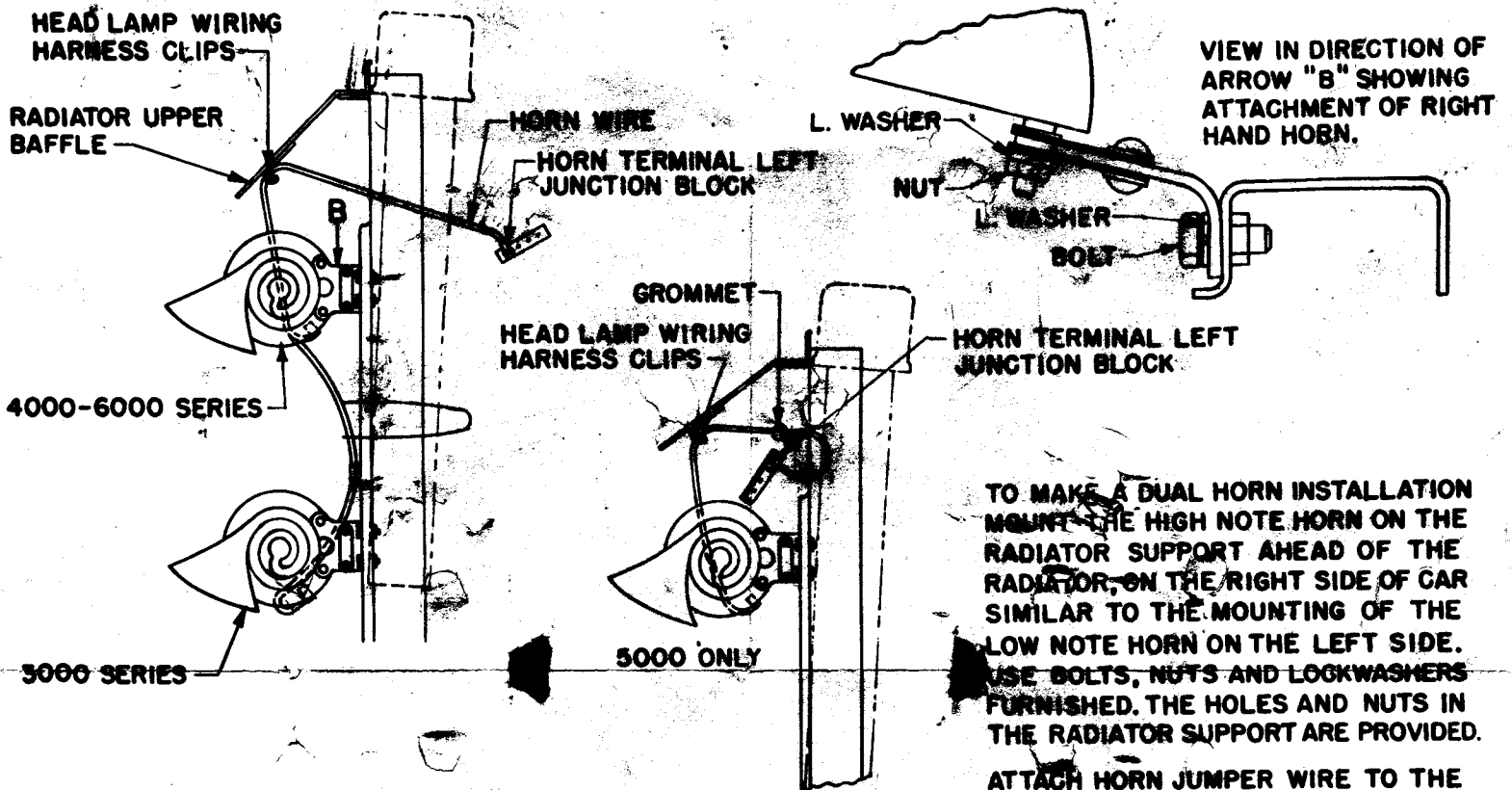
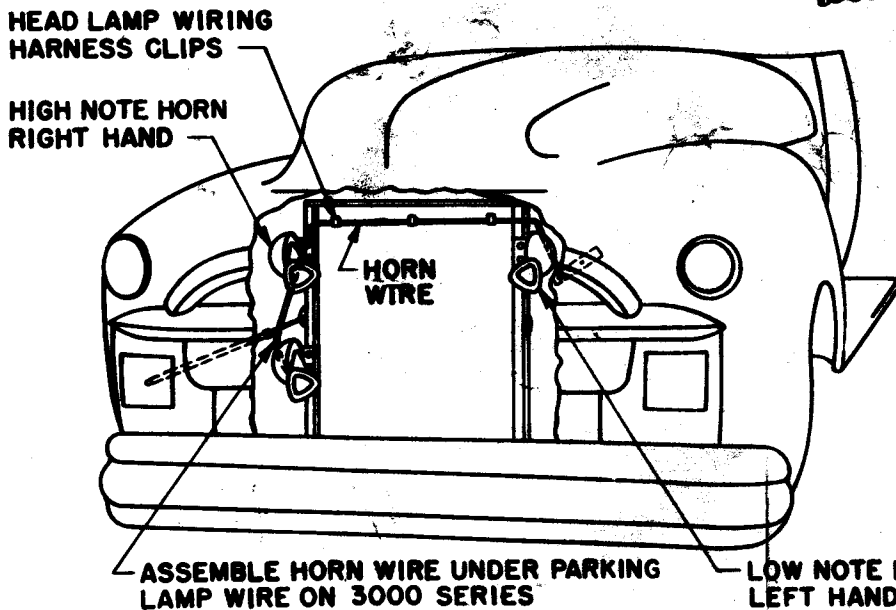


INSTALLATION INSTRUCTIONS FOR DUAL HORN



TO MAKE A DUAL HORN INSTALLATION MOUNT THE HIGH NOTE HORN ON THE RADIATOR SUPPORT AHEAD OF THE RADIATOR, ON THE RIGHT SIDE OF CAR SIMILAR TO THE MOUNTING OF THE LOW NOTE HORN ON THE LEFT SIDE. USE BOLTS, NUTS AND LOCKWASHERS FURNISHED. THE HOLES AND NUTS IN THE RADIATOR SUPPORT ARE PROVIDED.

ATTACH HORN JUMPER WIRE TO THE HORN TERMINAL OF THE LEFT HAND JUNCTION BLOCK. ROUTE HORN WIRE ALONG WITH HEAD LAMP WIRING HARNESS AND THRU CLIPS TO THE RIGHT SIDE AND ATTACH TO HORN TERMINAL. SOME MODELS REQUIRE LESS WIRE THAN OTHERS. LOOP UP ANY SURPLUS AND SECURE IN CLIPS.



PART NO. 3704954

CHEVROLET MOTOR DIVISION, GENERAL MOTORS CORPORATION