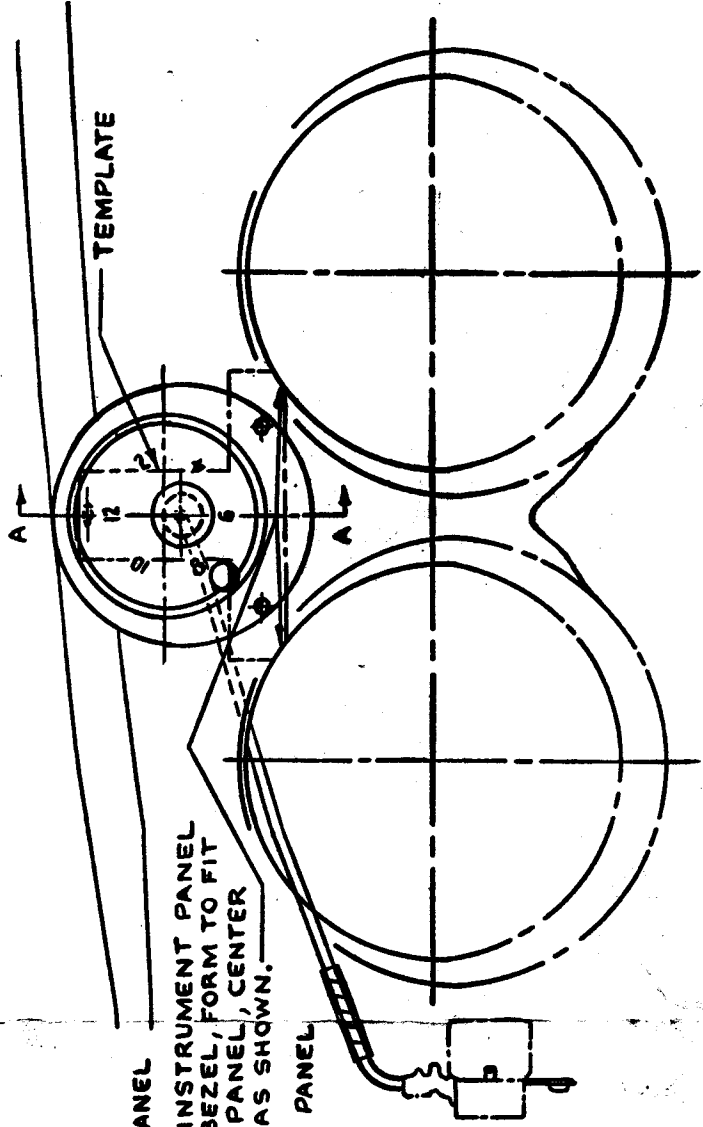


INSTALLATION INSTRUCTIONS FOR INSTRUMENT PANEL CLOCK HOUSING



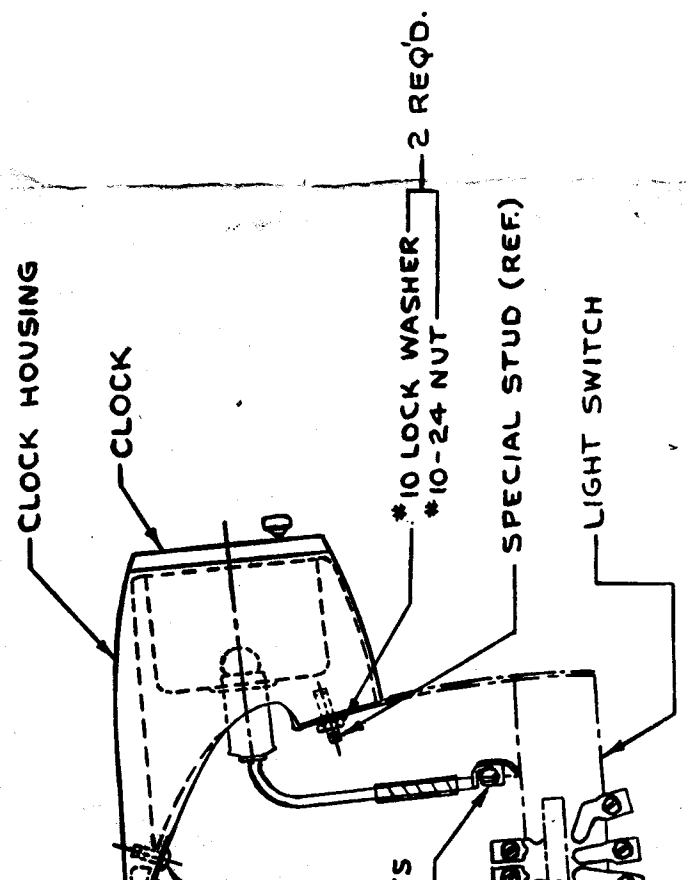
$\frac{3}{8}$ DIA. HOLE IN INSTRUMENT PANEL

1 DIA. HOLE IN INSTRUMENT PANEL

PLACE TEMPLATE AGAINST INSTRUMENT PANEL CLUSTER & SPEEDOMETER BEZEL, FORM TO FIT SURFACE OF INSTRUMENT PANEL, CENTER PUNCH & DRILL FOUR HOLES AS SHOWN.

$\frac{7}{32}$ DIA. 2 HOLES IN INSTRUMENT PANEL

SECTION A-A



CLOCK HOUSING

CLOCK

*10 LOCK WASHER
*10-24 NUT - 2 REQ'D.

SPECIAL STUD (REF.)

LIGHT SWITCH

FOR DELUXE EQUIPPED CABS PAINT
CLOCK HOUSING TO MATCH
INSTRUMENT PANEL